

**Facade
(Building C Along
Victoria Avenue)**

Powder coated aluminium coping

Plain clay tiled roof

Powder coated aluminium cladding to recessed top floor

Glazed balustrade balconies with curved soffits

Projecting brick course at every fourth row

Vertical stack bonded brickwork with projecting courses and raked joints above and below windows

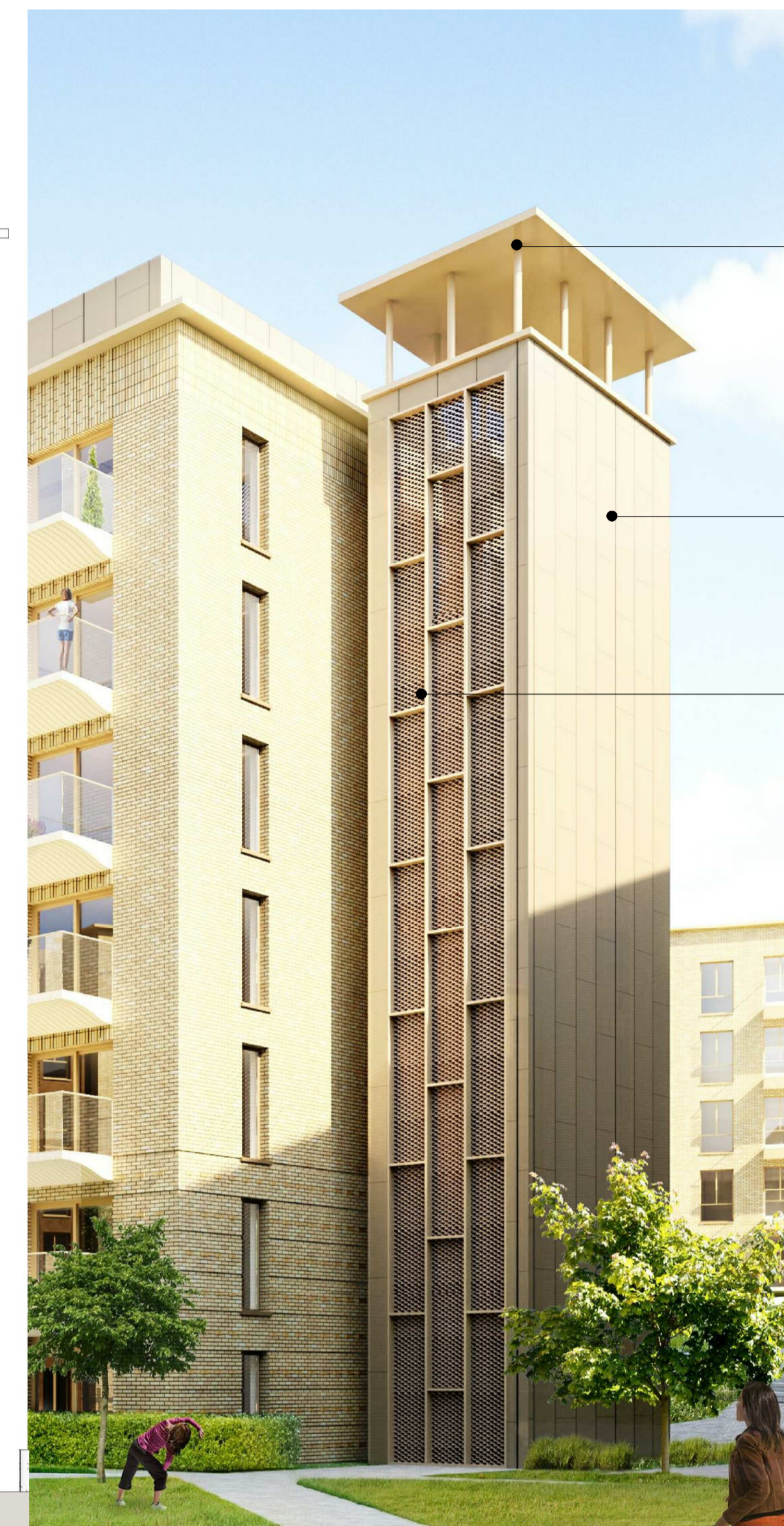
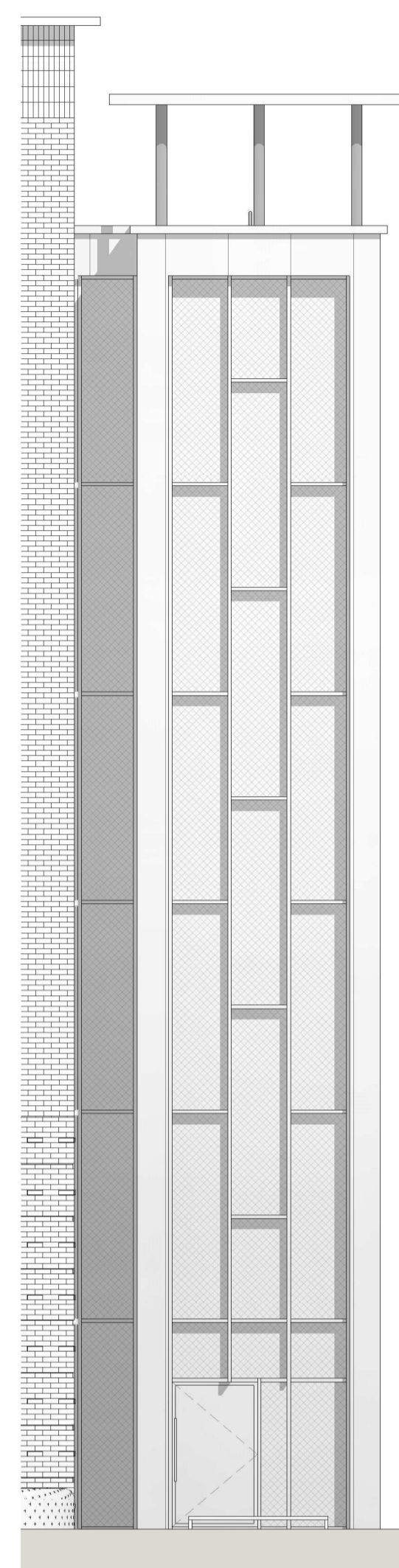
High performance composite powder coated aluminium and timber windows at wintergarden

550mm high powder coated built up signage with deep coping over and integrated LED striplight

Feature powder coated railings



**Escape Stairs
(Buildings A, B & E)**



Feature powder coated canopy on columns

Powder coated aluminium cladding

Powder coated aluminium frame with aluminium mesh infill panels

Facade Houses

Powder coated aluminium coping

Plain clay tiled roof

Recessed rainwater downpipe with projecting quoin feature

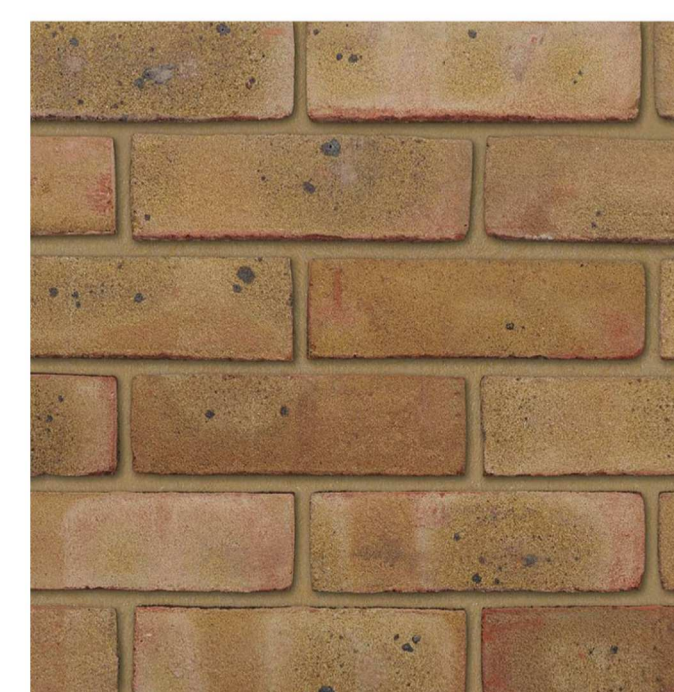
High performance composite powder coated aluminium and timber windows with full brick recess

Vertical stack bonded brickwork with projecting courses and raked joints above and below windows

Feature powder coated railings



Brick Type



Istock Arundel Yellow or similar



Wienerberger Oakington Buff or similar

Rev:P03	Date:12.02.2021	Drw:KW	Chk:SG
Building C Victoria Avenue Bay Detail Update			
Rev:P02	Date:09.09.2020	Drw:KW	Chk:SG
Building C Victoria Avenue Bay Detail and Landscape			
Rev:P01	Date:03.10.2019	Drw:FD	Chk:SG
For Planning			

Do not scale off this drawing
Report all errors and omissions to the Architect
Dimensions to be checked on site
Plot date: 10/02/2021 18:02:58

Client:
Southend United FC

Project:
Roots Hall - Southend on sea

Title:
Facade Materials Sheet 02

Drawing status:
For Planning